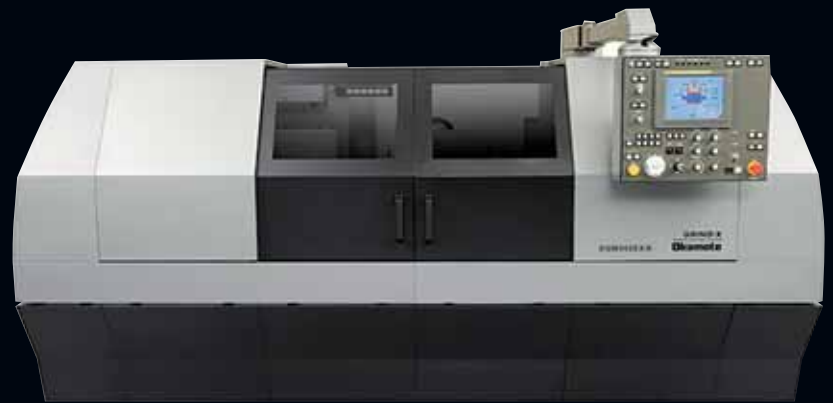


CYLINDRICAL GRINDING MACHINE

OGM-EX III
OGM-NC III

SERIES



Okamoto

OGM-EX III / NC III Series

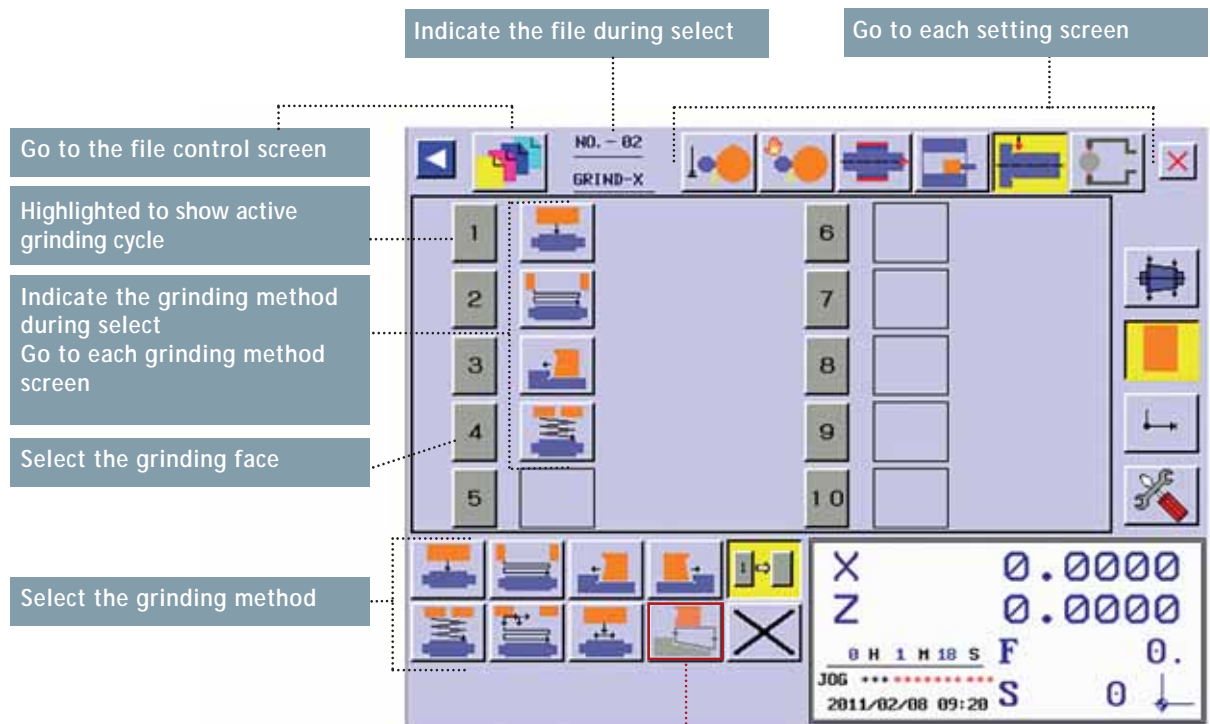
Data input has been much improved by the grinding data a

Grinding data automatic setting function

The most suitable grinding parameters, according to our grinding experience, are automatically entered by inputting only the wheel grain size and wheel width.

Touch panel input

There is no dialogue on the screen. All parameters, even those for complicated forms, are input via the touch screen and operator panel.



As option

Main screen of NC III Series



OGM350EX III

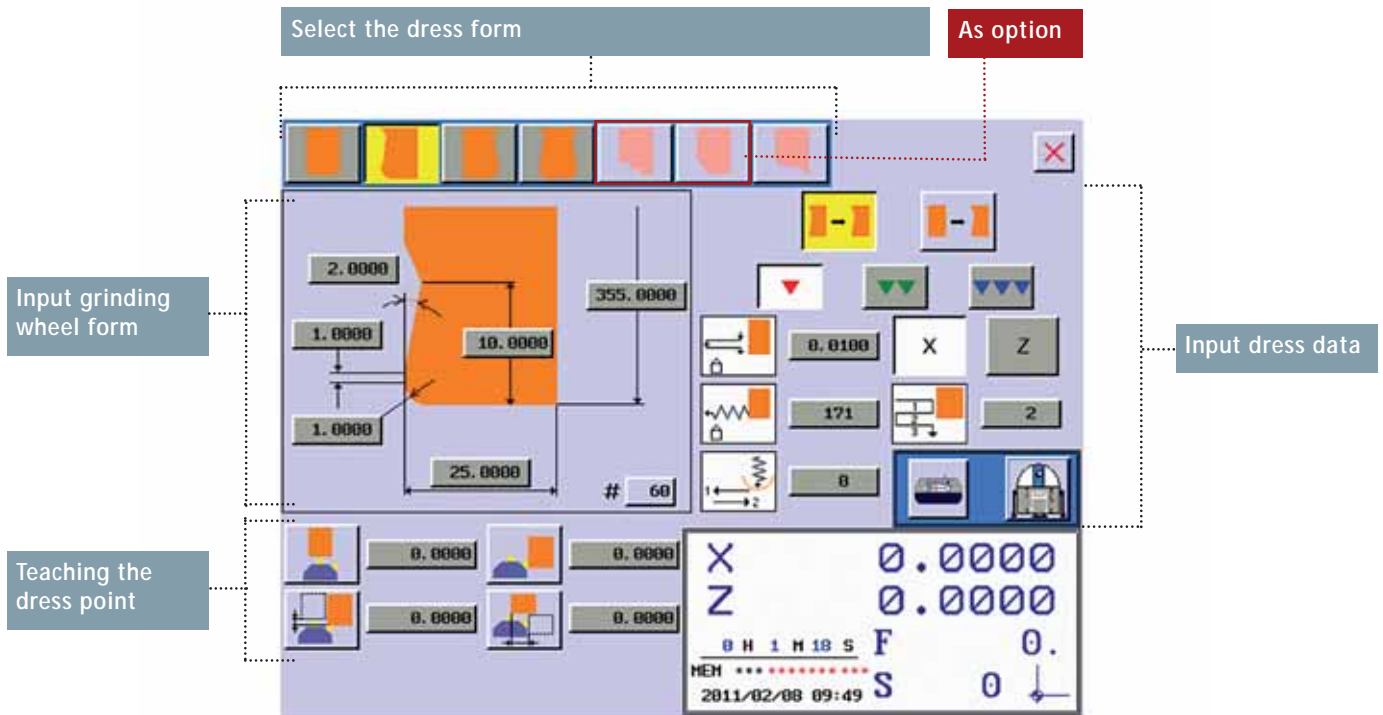
Automatic setting function via the graphical touch screen.

Indication of estimated cycle time

Cycles can be optimized during setting.

File control

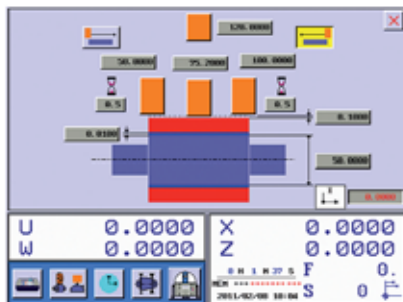
21 part programmes can be stored.



Grinding form select screen (Screen is NC III)

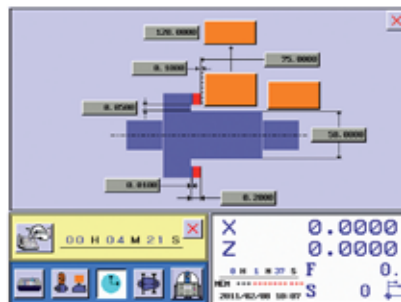
Main Screen (Common EX III · NC III)

Travers data setting screen

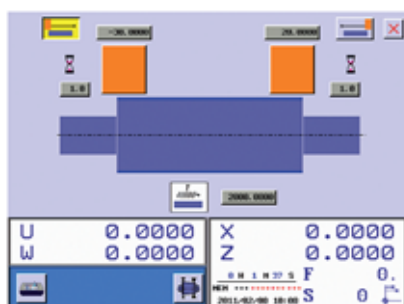


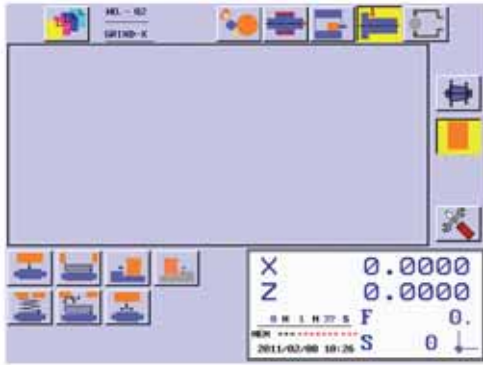
Manual traverse setting screen

Face grinding data setting

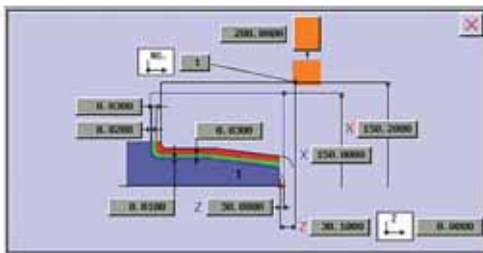


Main screen of the internal grinding (with internal grinding attachment option)





Main screen of EX III Series



Screen of contour grinding (option)

OGM-EX III Series

Concept is as conventional type machine with automatic dress function

- The standard software is one step grinding. (10 steps available as option)
- Face grinding is also set by teaching.
- Locator and Gap eliminator are available as option.
- Both the grinding wheel and work spindles are driven by AC servo motors as standard. The highest accuracy is possible.
- There is standard manual pulse generator for longitudinal and cross feed, you can operate like conventional type.

OGM-NC III Series

Complicated form grinding made easy

- The standard software has 10 step grinding as standard.
- Contour grinding software available as option.
- Face grinding is also set by teaching.
- Both the grinding wheel and work spindles are driven by AC servo motors as standard. The highest accuracy is possible.

Standard accessories		EX III Series	NC III Series
Grinding wheel		0	0
Grinding wheel flange		0	0
Carbide center 2 pcs		0	0
Grease gun		0	0
Short circuit breaker		0	0
Manual taper fine adjustment type tailstock		0	0
One step software & 2 point dress		0	-
10 steps software & 3 point dress		*option	0
Automatic grinding cycle	Plunge grinding	0	0
	Traverse grinding (left, right, both sides)	0	0
	Plunge oscillation grinding	0	0
	Plunge and fine oscillation grinding	0	0
	Rough shift plunge grinding & fine traverse grinding	0	0
	Manual traverse grinding	0	0
	Shoulder grinding (right side)	0	0
Cycle time estimate indication		0	0
Preparation for mist extraction (hood)		0	0
Table swivel measuring device		0	0
Tool nose R compensation		-	0
LED lamp inside cover		0	0
Work head AC servo motor		0	0
Grinding wheel AC spindle motor		0	0
Table cooling via constant coolant supply		0	0
Dress coolant system		0	0
Table feed manual pulse handle		0	0
Interlocked door		0	0
Wheel safety visor		0	0
Locator (grinding wheel head front type)		option	0

* If you use this option we recommend locator system.

OGM-EXIII / NCIII Series Specification

Item		Unit	200 Series		300 Series							
			Plain Type	Universal Type	Plain Type			Universal Type				
			250	250	350	390	3150	350	390	3150		
Capacity	Work swing over table	mm	220		320							
	Distance between centers	mm	500	500	500	900	1500	500	900	1500		
	Maximum grind diameter	mm	200		300							
	Workhead maximum weight	kg	50		150							
Grinding wheel	Size (OD x W x ID)	mm	ø355x50xø127		ø455x50(option 75)xø127			ø405x50(option 75)xø127				
	Max. peripheral speed	m/sec	45 (Inverter Standard)		45 (Inverter Standard)							
Grinding wheel head	X axis travel distance	mm	215		300							
	Swivel angle	deg	Non-swivel		Non-swivel			±30				
	Least travel increment (φ)	mm	0.0001									
	Rapid feed rate (φ)	m/min	4									
Table	Z axis travel distance	mm	762	762	870	1270	1870	870	1270	1870		
	Swivel angle	deg	0~ -9	0~ -9	0~ -10	0~ -8.5	0~ -5	0~ -10	0~ -8.5	0~ -5		
	Least travel increment	mm	0.0001									
	Rapid feed rate	m/min	8				10					
Work head	Spindle type	—	Rigidity spindle for dead and live combined use									
	Center taper	MT	No.3			No.4						
	Through hole diameter	mm	φ18			φ20						
	Spindle speed	min ⁻¹	10~500									
	Swivel angle	deg	30~ -90			Non-swivel			30~ -90			
Tailstock	Tailstock spindle type	—	Manual taper fine adjustment type									
	Spindle stroke	mm	20				30					
	Center taper	MT	No.3			No.4						
Motor	Grinding wheel spindle	kW	3.75			5.5(option 7.5)						
	Workhead spindle	kW	1.8 (AC servo motor)			1.8 (AC servo motor)						
	Table feed	kW	1,2 (AC servo motor)									
	Grinding wheel head feed	kW	1,2 (AC servo motor)									
	Lubricating pump	W/P	3/4									
Required electrical power consumption	kVA	15				20						
Tank capacity	Lubrication oil	Liters	3									
Height from floor to work center	mm	980				1000						
Floor space	Length	mm	2920		3400	4200	5600	3400	4200	5600		
	Width x Height	mm	2010x1800		2330x1950							
Machine weight	Net	kg	3300		4600	5000	6000	4600	5200	6000		

* Electrical power consumption and floor space requirements may change subject to specification.

* Standard color is brownish (Munsell 5Y6/1). A separate quotation is necessary for special color.

GRIND-X
OKAMOTO PRECISION SYSTEMS
Okamoto

OKAMOTO MACHINE TOOL EUROPE GMBH

Paul-Ehrlich-Str. 9, 63225 Langen, Deutschland
Tel: +0049-6103-201100, Fax: +0049-6103-2011020
www.okamoto-europe.de · info@okamoto-europe.de

OKAMOTO MACHINE TOOL WORKS LTD.

SEKI 3 Bldg, 3-5-7 Nakamachidai, Tsuzuki-ku, Yokohama,
Kanagawa, 224-0041 Japan
Tel: +81-45-949-3881, Fax: +81-45-949-3787
URL: http://www.okamoto.co.jp



Caution

*When and before using our products, you are requested to well go through the articles on danger, warning and attention for the sake of safety described in operation manual attached to the machine and also in the warning plates mounted on the machine.

*Specifications subject to change without notice.

*When a product manufactured at our factory comes under the Foreign Exchange and Foreign Trade Control Law and is exported or carried overseas, it is necessary to receive permission or approval of the Japanese Government.

Printed in Germany in September 2011(Revised March 2016)